

SRA-23 UC/UCC

Multipurpose riveting head with high capacity and versatility. Designed to be integrated into special machines requiring increased flexibility. Developed with in-house technology, class leading quality and high reliability.

www.agme.net

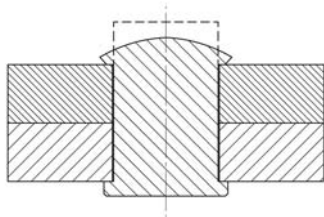
ORBITAL SERVO RIVETING MACHINE

AGME
Automated assembly solutions

ORBITAL SERVO RIVETING MACHINE

/ SRA-23 UC/UCC

- Capable of riveting harder material or increased diameters.
- Wide range of use: from 6 to 23 mm final diameter.
- Riveting of multiple diameter heads in a single machine.
- Improvement of the special machines' flexibility and capacity.
- 100% Electrical operated.
- Available in two versions:
 - **SRA-23 UC**. Basic head without control systems.
 - **SRA-23 UCC**. Intelligent head with control components.
- Working modes: position, force, distance from contact and time.



Rivet Section

/ Technical characteristics

MODEL	SRA-23 UC	SRA-23 UCC
Riveted head final diameter in 40daN/mm ² steel	6 - 23 mm	6 - 23 mm
Adjustable maximum force	5-50 kN	5-50 kN
Maximum stroke	100 mm	100 mm
Maximum approach speed	240 mm/sec	240 mm/sec
Working speed range	1 - 35 mm/sec	1 - 35 mm/sec
Riveting motor power	1,5 kW	1,5 kW
Servo motor and driver	Bosch-Rexroth	Bosch-Rexroth
Orbital head kit R100	•	•
Automatic greasing	•	•
Installed power	17 kVA	17 kVA
Voltage	3 x 400VAC 50Hz	3 x 400VAC 50Hz
Riveting tool diameter	20 mm	20 mm
Machine dimensions	1360x394x293 mm	1360x394x293 mm
Weight	156 Kg	165 Kg
Control unit	-	Siemens
Control circuit	-	24 VDC
Control software	-	•
Optional		
10" touch panel-PC operator interface	-	•

