



PE-50/UC/UCC

**ELECTRIC
PRESSES**

ELECTRIC PRESSES

INTELLIGENT PRESSING SOLUTIONS WITH SERVO TECHNOLOGY

The AGME PE electric presses and servo presses are the intelligent solution to perform assembly and forming processes which require critical precision, control and monitoring of the pressing results.

AGME PE electric presses deliver an integrated and flexible solution that enables the user to control all process parameters, to a high degree of precision, across the total press range including position, load and speed. AGME PE servo presses are fully electric and do not require any pneumatic or hydraulic power source. All of our presses have full CE certification and are completely developed at AGME Automated Assembly Solutions using the latest servo technology.



/PE-50

ADVANTAGES

High accuracy and functionality

- Different functions and working modes: stroke, load, distance from contact and pressing time.
- Load measurement accuracy of $\pm 5\%$ (standard), $\pm 0,5\%$ if the load cell kit is included (optional).
- Robust frame, dynamic compensation system and a high repeatability give more accuracy than the conventional pressing systems.

AGME electric presses meet the real needs of every application and deliver exact results, even in the toughest industry environments.

Higher quality control

- Higher pressing process control: speed, repeatability and increased capacity to optimize your application.
- Load-stroke graph display to monitor the process.

- Ability of adding control windows to guarantee high quality pressing results.

Flexibility and adaptability

Available in three versions:

- **PE-50** stand-alone electric press.
- **PE-50 UC** basic electric cylinder.
- **PE-50 UCC** intelligent servo press.
- The servo press heads have a compact design and are easily integrated vertical or horizontally into automatic and manual assembly lines.
- Easy to use software that allows data collection and the results monitoring without any specific training.
- Increased flexibility through the selection and control of the most important process parameters.
- Large storage capacity for recording results.

Environment friendly

- Significant energy savings in comparison to the non-electric presses.
- Reduced maintenance that minimizes the production lines stop times.
- Less noise generation than the non-electric systems.
- Safer and cleaner working environment.



/ SOFTWARE AND CONTROLS

The press control integrates a Siemens PLC allowing the management of different working methods: position, range, distance from contact and time in constant force.

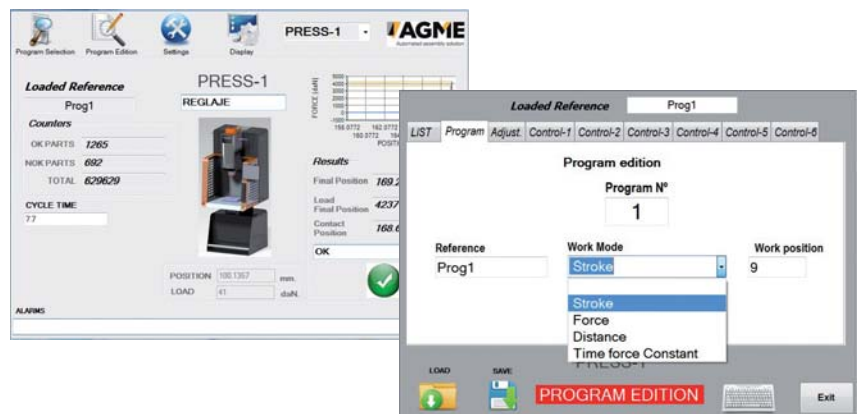
Free software with intelligent functions to monitor the process and complete reports of the pressing results including:

- Load in stroke, distance from contact, contact position, final position and final load.

- Pressing curves.
- PC storage of the results of every process in csv. files.
- Capacity for 100 working programs.
- Integration of warnings and alarms.

The PE-50 UCC servo press head also integrates the PLC and the software of the electric press.

Safety brake is included as standard in the PE-50 electric press and optional in the PE-50 UC / UCC servo press heads.



/ APPLICATIONS



AGME electric presses have **multiple applications** in both component assembly processes and in other related operations: joining, insertion, pressing, bending, riveting, rolling over, flaring, punching, clinching, test, control and marking.

In addition, our standard presses can be **adapted to the specific needs of every application** in terms of dimensions, frame and control functions and can be delivered as "turnkey" solutions.

The **industries** where AGME electric presses and servo press heads are supplied include:

- Automotive (suspension systems, seat frame components, electric windows, wipers, brake systems, airbags and wheel hubs, among others).
- Other industries such as household appliances, metal fittings and furniture industries.

Furthermore, our servo press heads are the **ideal solution** for manufacturers of special machines, integrators, technical offices and engineering firms that need to develop components assembly stations.



/PE-50/UC/UCC

The AGME **PE-50** electric press comprises of the frame, electric cylinder, electric components and safety systems. The press works in a self-sufficient and intelligent way and is managed by a Siemens PLC, control software and a 12" HMI Interface tactile panel in an integrated industrial PC.

The **PE-50 UC** servo press heads are electric press systems which include the servomotor and a driver but exclude the control unit. This allows the customer the flexibility to integrate a controller and software of their choice and complete their own cabling / electrical cabinet design.

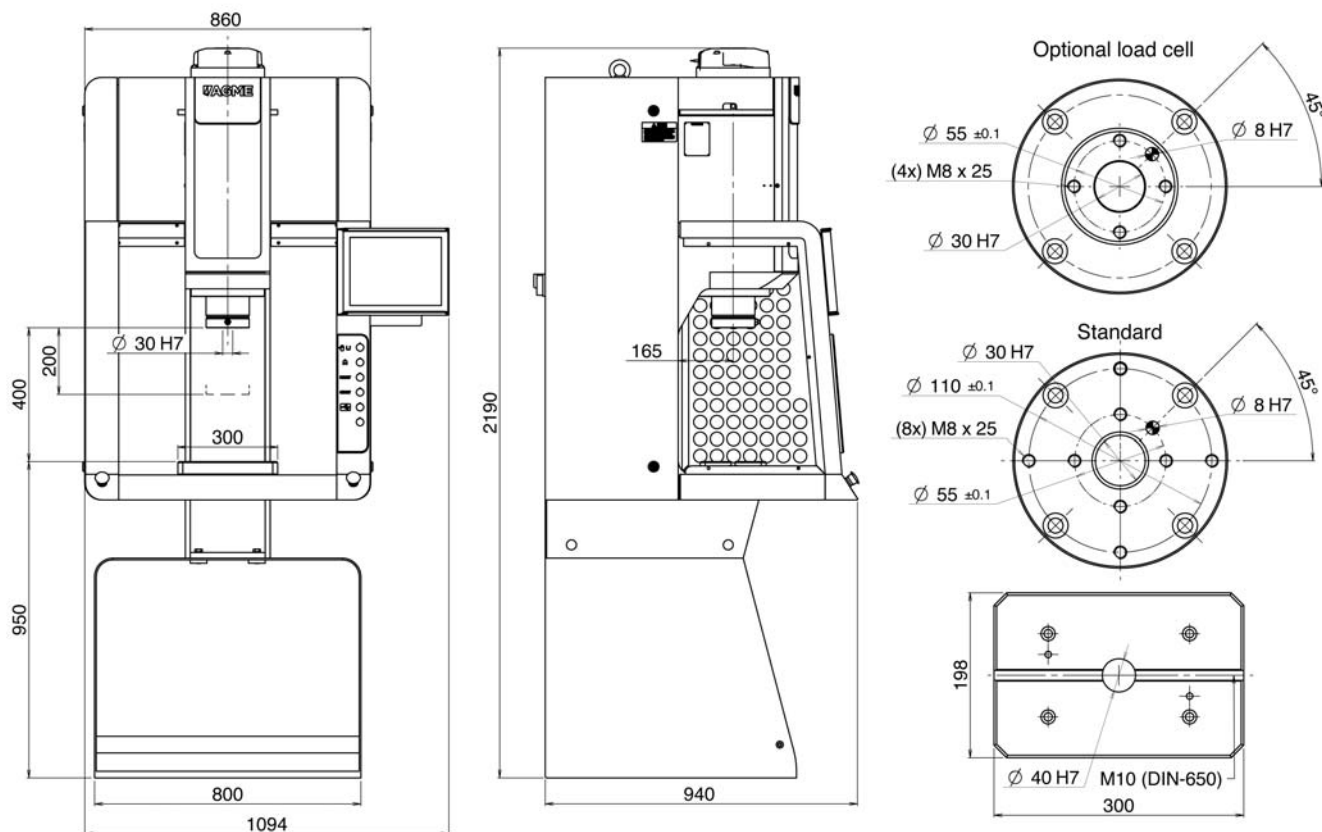
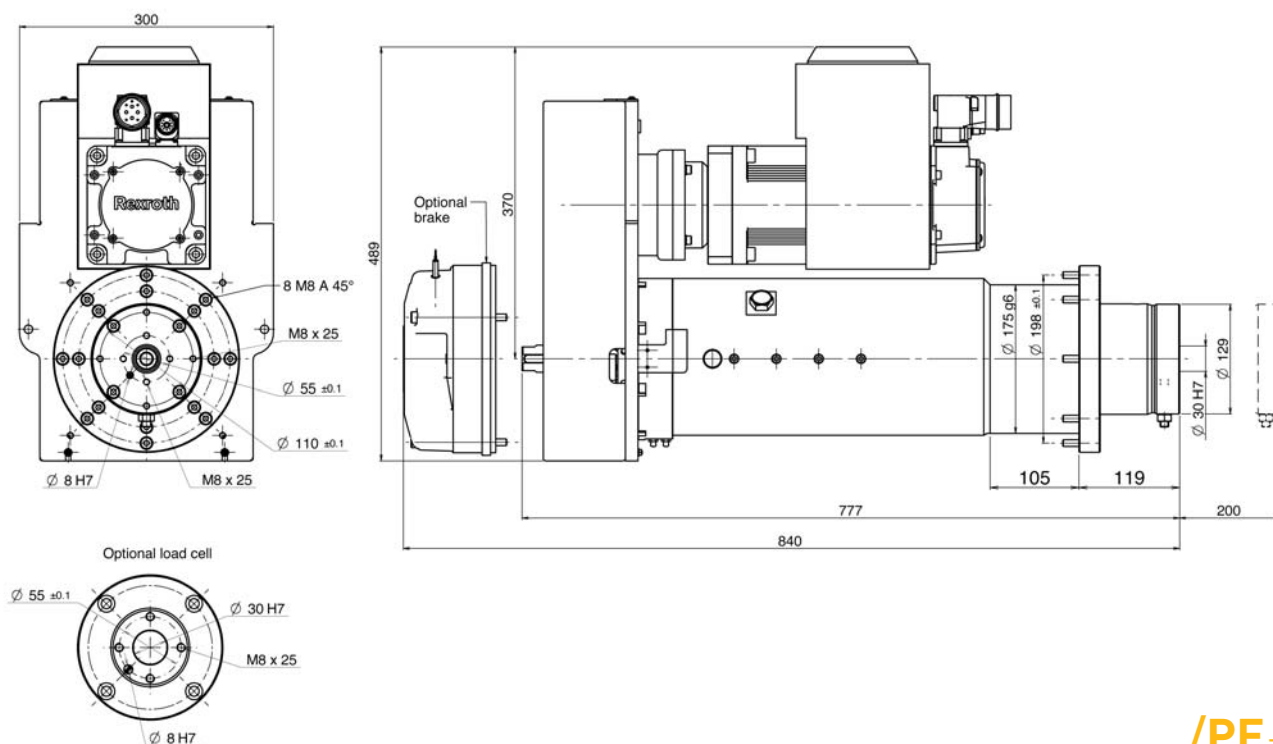
The **PE-50 UCC** servo press head is an intelligent press which has a servomotor / driver and PLC (with the press programs installed) supplied with a mounting plate. All that's required is the integration into the machine electrical cabinet and programming through a laptop or the machine PC.



/PE-50 UC

/ TECHNICAL CHARACTERISTICS

MODEL	PE-50	PE-50 UC	PE-50 UCC
Load capacity	5 - 50 kN	5 - 50 kN	5 - 50 kN
Máximum stroke	200 mm	200 mm	200 mm
Maximum approach speed without load	240 mm/sec	240 mm/sec	240 mm/sec
Working speed under load	1- 35 mm/sec	1- 35 mm/sec	1 - 35 mm/sec
Position repeatability	±0.01 mm	±0.01 mm	±0.01 mm
Load measurement accuracy (see options)	±5%	±5%	±5%
Voltage	3 x 400VAC 50Hz.	3 x 400VAC 50Hz.	3 x 400VAC 50Hz.
Installed power	17KVA	7KVA	7KVA
Maximum die weight	100 Kg	100 Kg	100 Kg
Tool coupling diameter	Ø30 H7 x 40 mm	Ø30 H7 x 40 mm	Ø30 H7 x 40 mm
Machine´s general dimensions	1094 x 940 x 2190 mm	489 x 300 x 777 mm	489 x 300 x 777 mm
Weight	560 Kg	120 Kg	130 Kg
CE certification	●	●	●
Servo motor and driver	Bosch-Rexroth	Bosch-Rexroth	Bosch-Rexroth
PLC Siemens	Integrated	-	On a mounting plate
Control Circuit	24V DC	-	24V DC
Control software	●	-	●
Complete electric cabinet	●	-	-
12" HMI Interface tactile panel	●	-	-
Safety brake	●	-	-
Die maximum dimensions	500 x 200 x 390 mm	-	-
Bench dimensions	300 x 198 mm	-	-
"T" dimensions	M10	-	-
Throat depth	165 mm	-	-
Distance between machine table and spindle	400 mm	-	-
OPTIONS			
Load measurement accuracy with a load cell	±0,5%	±0,5%	±0,5%
Special course up to 400 mm	●	●	●
Safety brake	-	●	●
10" HMI Interface tactile PC-panel	-	-	●



AGME WORLDWIDE

Global presence

EUROPE

Austria
Belgium
Czech Republic
France
Germany
Great Britain
Hungary
Italy
Netherlands
Poland
Portugal
Romania
Slovakia
Slovenija
Turkey

ASIA

China
India
Israel

AMERICA

Brazil
Canada
Mexico
USA

AFRICA

Egypto

National distributors

EUSKADI

Iker Beitia
T: 617 345 848
ikerbeitia@euskalnet.net

CATALUÑA

Industrias Galan
Fluviá, 79
08019 Barcelona
T: 932 174 808
F: 932 178 555
M: 607 263 124
egalan@iegalan.com

MADRID - CENTRAL AREA

Ingeniería y
Gestión Industrial, S.L.
C/ Sagunto, 11, bajo ext. izqda
28010 Madrid
T: 91 591 21 07
F: 91 447 12 13
M: 629 380 090
c.carabajal@ingegest.com

NAVARRA - LA RIOJA

Javier Onieva
M: 679 965 334
j.onieva@agme.net

Contact details on
www.agme.net



Automated assembly solutions

HEADQUARTERS

Aguirregomezcorta y Mendicute S.A.

Apdo. 263. Apalategi, 7
20600 Eibar. Gipuzkoa. Spain
T:+34 943 121 608
F:+34 943 121 572
agme@agme.net
www.agme.net

